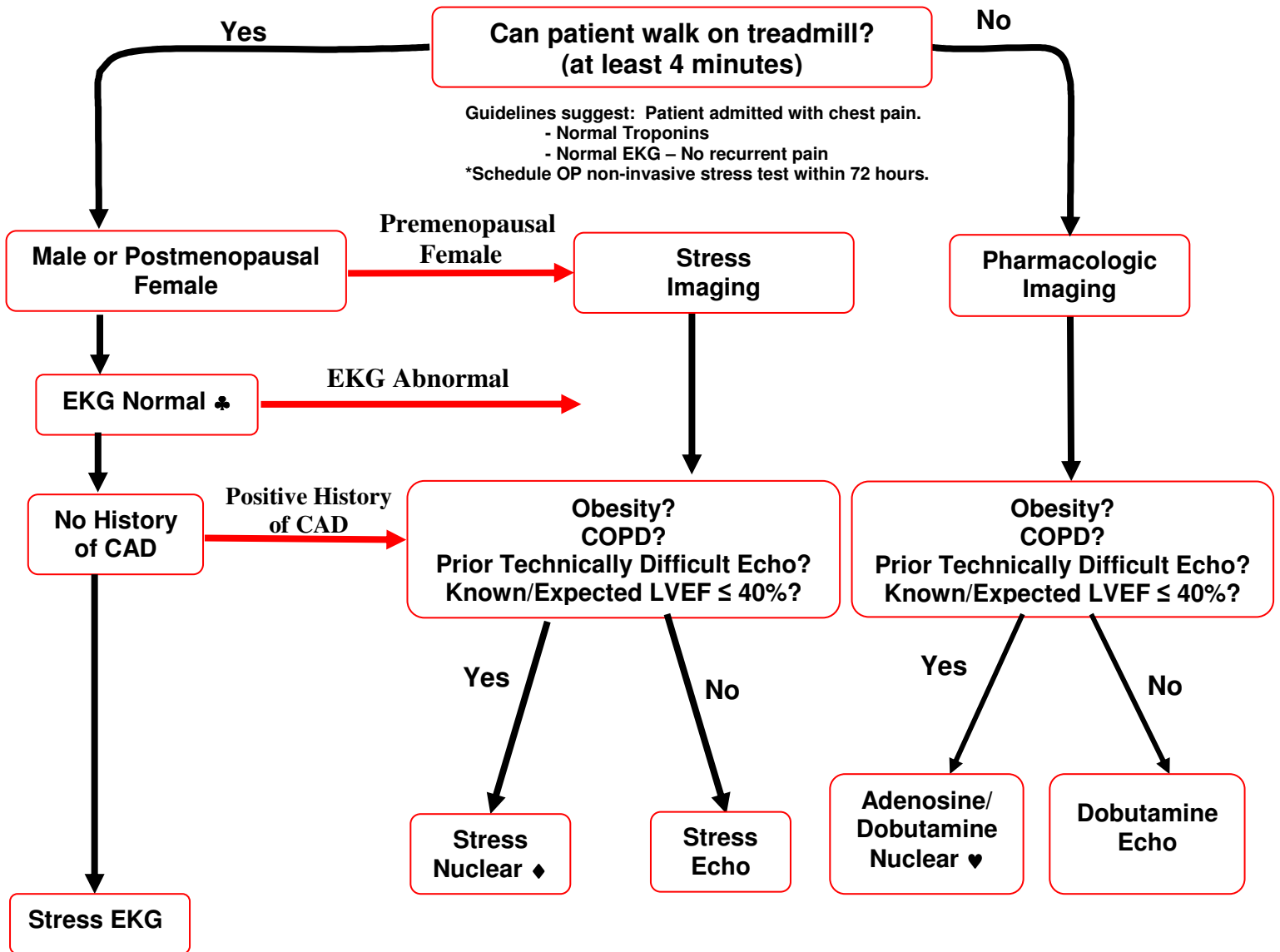


STRESS TEST ALGORITHM



♣LBBB, permanent pacemaker (Adenosine Nuclear)
 ST/T Changes
 Any rhythm other than sinus rhythm. (If atrial fibrillation,
 adenosine nuclear may be better)

♦ If indication for test includes dyspnea. Consider echo for
 assessment of pulmonary arterial pressure, diastolic function,
 pericardial disease, and valvular evaluation

♥ If COPD and patient on theophylline or home O₂ or actively
 wheezing, then a dobutamine nuclear is recommended

✓ Hold beta-blocker for 24-48 hours unless purpose of test is
 to assess medical therapy of angina.

✓ Nitrates and calcium antagonists should be held the
 morning of the test unless essential for BP control